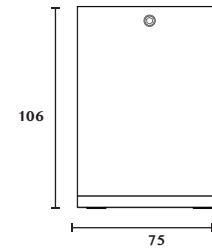
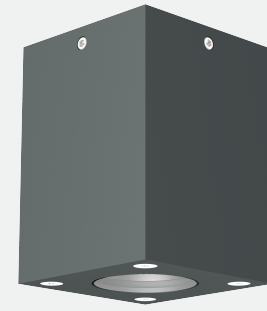


Technical Data

Application Category	Ceiling Mount
Wattage	11w
Source Lumen	720LM
Ingress Protection	IP65
Material	Excellent Corrosion Anodized Solid Aluminium Body And Part.
Coatings	"Duracoat" - Double Protection Anodising And Powder Coating.
Light Source	1 X COB LED
Life Span	50000 hrs*
Screws	Stainless steel
Power Supply	Integral 230VAC/24VDC
Gasket	High Grade Long lasting Silicon Gasket.
Glass	Extra Clear Impact Resistant Toughened Glass.
Cable Gland	Silicon Gourmet
Power Cable	Cable Not Included.
Dimension	Height-106mm, Dia 75mm
Gross Weight	-



Features

- Solid Aluminium Body.
- Extra Safety Impact Resistant, Toughened Glass.
- High Efficiency Optical System.
- Extra Clear Glass To Increase Efficiency Of The Fixture.
- "Coro Safe" High Grade Anodizing.
- "Duracoat" Double Layer Body Coating To Withstand Corrosion.
- "Weatherprotect" Outdoor Rated Powder Coating.
- "Long Life" Thermal Management.

Family	Type	Code	Wattage	CRI	Optics	CCT	Fixture Finish	Supply	Accessories
BOXY	CM	75- COB-INT	11 - 11w	8 - 80 CRI 9 - 90 CRI	NS - 10° S - 24° M - 45° MF - 60°	27 - 2700K 30- 3000K 40- 4000K	G-Graphite Grey B-Black W-White C - Corton G - Dark leaf Green	230 - 230VAC 24-24VDC	-

Code Example :- [BOXY_CM_75-COB-INT_11_8_NS_27_G_AC](#)