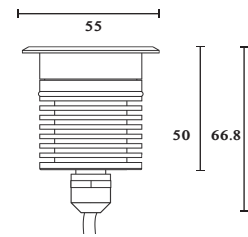
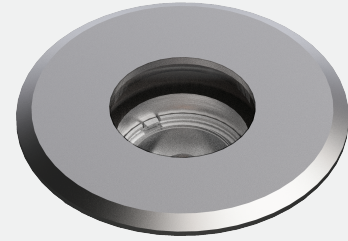




Technical Data

Application Category	Inground
Wattage	1w, 1.5w, 2w
Source Lumen	120lm, 180lm, 240 lm
Ingress Protection	IP67
Material	Excellent Corrosion Resistance Low Copper, Solid Anodized Aluminium Body and 316 Stainless Steel Ring.
Coatings	"Coro safe" Anodized Aluminium and SS Faceplate.
Light Source	1 x High Power Led
Life Span	50000 hrs.*
Screws	N/A
Power Supply	Remote CC Driver (3v 350mA / 3v 500mA / 3v 700mA)
Gasket	High Grade Long Lasting Silicon Gasket.
Glass	Extra Clear Impact Resistant Toughened Glass.
Cable Gland	Double Nickel-Plated German Brass Cable Gland M12,High Quality Silicon Gourmet.
Power Cable	300mm All-Weather Neoprene Power Cable Included.
Dimension	55 mm Dia 66.8 mm Height, 37 mm Cut Out.
Gross Weight	-



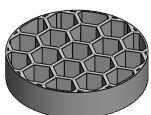
Features

- Excellent Corrosion Resistant Low Copper Solid Aluminium Body.
- SS316 Faceplate.
- Extra Safety Impact Resistant Toughened Glass.
- Extra Clear Glass To Increase Efficiency Of The Fixture.
- High Grade Brass Nickel Plated German Gland.
- High Grade Neoprene Silicon Based Italian Cable To Withstand Any Weather Conditions .
- Best In Class Thermal Management.
- High Efficiency Optical System.
- Multiple Accessories Support
- Cree LED 50000* hrs Life
- Recessed Housing Made Of GFR Polymer.
- "Coro Safe" High Grade Anodizing.
- "Long Life" Thermal Management.

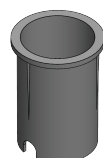
Family	Type	Code	Wattage	CRI	Optics	CCT	Fixture Finish	Supply	Accessories
Terra	ING	55	1-1W 1.5 - 1.5w 2 - 2w	8 - 80 CRI 9 - 90 CRI (On request*)	SP - 10° M - 24° W - 40° WFL - 60° EL- 30x 65° DF - Diffused	27 - 2700K 30- 3000K 40- 4000K	AS- Anodized silver	CC - Constant Current Driver	HL-20 - Hexcell Louvre (one accessory only)

Code Example :- Terra_ING_55_1_8_SP_27_AS_CC_HL-20

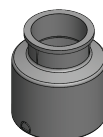
Accessories



HL-20
(Hexcell Louvre)



RK-55-S
(Recessed Housing)



RH-55-B
(Recessed Housing)



Meanwell APC 8-700
(Driver 3 fixtures)