

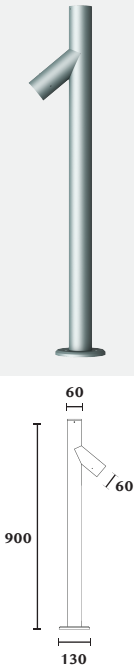
BAMBOO

BAMBOO



Technical Data

Application Category	Bollard
Wattage	8w
Source Lumen	1260LM
Ingress Protection	IP65
Material	GI Pipe And Solid Aluminium Parts.
Coatings	"Weather Protect" High Grade Pure Polyester, Outdoor Powder Coating.
Light Source	1 x COB LED
Life Span	50000 hrs*
Screws	Stainless steel
Power Supply	Integral 230vAC/24vDC
Gasket	High Grade Long Lasting Silicon Gasket.
Glass	Extra Clear Impact Resistant Toughened Glass
Cable Gland	N/A
Power Cable	Cable Not Included.
Dimension	Width - 60 mm* Base - 130mm, Height - 900mm
Gross Weight	-



Features

- High Efficiency Optical System.
- Extra Clear Glass To Increase Efficiency Of The Fixture.
- "Weather Protect" Outdoor Rated Powder Coating.
- "Long Life" Thermal Management.

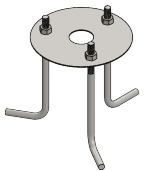
CV Benefits

- (24 V - Low Voltage)
- Maximum Driver Distance Option. (Long Distance Remote Driver Location)
- Easy Maintenance & Common Driver For Many Fixtures.
- "Human Safe Design" Low Voltage Across Landscape.

Family	Type	Code	Wattage	CRI	Optics	CCT	Fixture Finish	Supply	Accessories
BAMBOO	BO	90-900mm ht.	8- 8w	8 - 80 CRI	NS - 10° S - 24° M - 36° MF - 60° D - Diffused	30- 3000K 40- 4000K	G-Graphite Grey B-Black W-White C - Corton G - Dark leaf Green	230 - 230vAC 24-24vDC	-

Code Example :- BAMBOO\_BO\_90\_8\_8\_NS\_30\_G-AC

Accessories



Foundation Kit  
GPR-130/JB3-8x150