

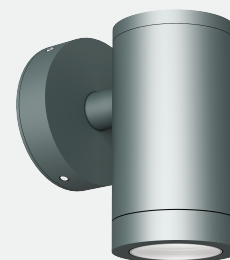
# BULLET

## WM-61D-HP



### Technical Data

Application Category	Wall Mounted
Wattage	8w
Source Lumen	720lm
Ingress Protection	IP65
Material	Excellent Corrosion Anodized Solid Aluminium Body And Part.
Coatings	"Duracoat" - Double Protection Anodising And Powder Coating.
Light Source	1 x High Power Led
Life Span	50000 hrs*
Screws	Stainless steel
Power Supply	Integral 230vAC/24vDC
Gasket	High Grade Long lasting Silicon Gasket.
Glass	Extra Clear Impact Resistant Toughened Glass.
Cable Gland	Silicon Gourmet
Power Cable	Cable Not Included.
Dimension	-
Gross Weight	-



### Features

- Solid Aluminium Body.
- Extra Safety Impact Resistant, Toughened Glass.
- High Efficiency Optical System.
- Extra Clear Glass To Increase Efficiency Of The Fixture.
- "Coro Safe" High Grade Anodizing.
- "Duracoat" Double Layer Body Coating To Withstand Corrosion.
- "Weatherprotect" Outdoor Rated Powder Coating.
- "Long Life" Thermal Management.

Family	Type	Code	Wattage	CRI	Optics	CCT	Fixture Finish	Supply	Accessories
BULLET	WM	61D-HP	8 - 8w	8 - 80 CRI 9 - 90 CRI	VNS - 4° SP - 10° M - 24° W - 40° WFL - 60° EL- 30x 65°	27 - 2700K 30- 3000K 40- 4000K	G-Graphite Grey B-Black W-White C - Corton G - Dark leaf Green	230 - 230vAC 24-24vDC	HL - Hexcell Louvre

Code Example :- BULLET\_WM\_61D-HP\_8\_8\_V\_27\_G\_AC\_HL

### Accessories