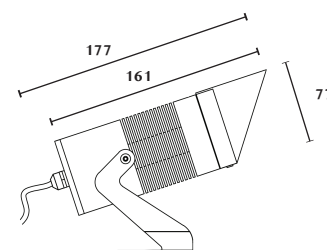


Technical Data

Application Category	Spot Light
Wattage	14w
Source Lumen	1764LM
Ingress Protection	IP66
Material	Excellent Corrosion Anodized Solid Aluminium Body And Part.
Coatings	"Duracoat" - Double Protection , Anodising And Powder Coating.
Light Source	1 x COB LED
Life Span	50000 hrs.*
Screws	Stainless steel
Power Supply	Integral 230vAC / 24 vDC
Gasket	High Grade Long Lasting Silicon Gasket.
Glass	Extra Clear Impact Resistant Toughened Glass.
Cable Gland	Double Nickel-Plated German Brass Cable Gland M12,High Quality Silicon Gourmet.
Power Cable	1000 mm All Weather Neoprene Silicon Power Cable Included.
Dimension	75 mm Dia 177 mm Height.
Gross Weight	-



Features

- Solid Aluminium Body.
- Extra Safety Impact Resistant Toughened Glass.
- High Efficiency Optical System.
- Extra Clear Glass To Increase Efficiency Of The Fixture.
- High Grade Brass Nickel Plated German Gland.
- High Grade Neoprene Silicon Based Italian Cable To Withstand Any Weather Conditions .
- Recessed Spike Made Of GFR Polymer.
- "Coro Safe" High Grade Anodizing.
- "Duracoat" Double Layer Body Coating To Withstand Corrosion.
- "Weatherprotect" Outdoor Rated Powder Coating.
- "Capillary Protect System" Anti-Capillary System To Protect Any Water Ingress From Cable Joints.

CV Benefits

- Long Lenght Operation & Maximum Driver Distance Option. ·
- Easy Maintenance & Common Driver For Many Fixtures.
- "Human Safe Design" Low Voltage Across Landscape.
- "Long Life" Thermal Management.

Family	Type	Code	Wattage	CRI	Optics	CCT	Fixture Finish	Supply	Accessories
Lugar	SP	75 COB INT	14 - 14w	8 - 80 CRI 9 - 90 CRI	SP - 16° M - 22° MF - 38°	27 - 2700K 30- 3000K 40- 4000K	G-Graphite Grey B-Black W-White C - Corton G - Dark leaf Green	230 - 230vAC 24 - 24vDC	HL-58- Hexcell Louvre

Code Example :- LUGAR_SP_75-COB-INT_14_8_SP_27_G_AC_HL-58

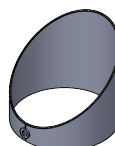
Accessories



HL-58
(Hexcell Louvre)



Tree Belt
TB-50-1.5



SP75-COWL



ARP-220