


MONO

MONO 1



Technical Data

Application Category	Bollard
Wattage	8.4w
Source Lumen	756LM
Ingress Protection	IP65
Material	Aluminium Extrusion And Solid Aluminium Parts.
Coatings	"Weather Protect" High Grade Pure Polyester, Outdoor Powder Coating.
Light Source	1 x High Power Led
Life Span	50000 hrs*
Screws	Stainless steel
Power Supply	Integral 230vAC/24vDC
Gasket	N/A
Glass	N/A
Cable Gland	N/A
Power Cable	Cable Not Included.
Dimension	Height - 700mm
Gross Weight	-



Features

- Solid Aluminium Body.
- High Efficiency Optical System.
- "Weather Protect" Outdoor Rated Powder Coating.
- "Long Life" Thermal Management.

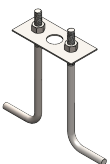
CV Benefits

- (24 V - Low Voltage)
- Maximum Driver Distance Option. (Long Distance Remote Driver Location)
- Easy Maintenance & Common Driver For Many Fixtures.
- "Human Safe Design" Low Voltage Across Landscape.

Family	Type	Code	Wattage	CRI	Optics	CCT	Fixture Finish	Supply	Accessories
MONO	BO	70-700mm ht.	8.4- 8.4w	8 - 80 CRI	M - Medium V beam	30- 3000K 40- 4000K	G-Graphite Grey B-Black W-White C - Corton G - Dark leaf Green	230 - 230VAC 24-24VDC	-

Code Example :- MONO_BO_70_8.4_8_M_30_G_AC

Accessories



Foundation Kit
GPREC-92x40/JB2-8x150